

Stereotactic Needle Biopsy Phantom

Model 013



A COMPRESSIBLE BREAST BIOPSY PHANTOM THAT WON'T LEAK

The CIRS Stereotactic Needle Biopsy Phantom provides a leak-free, compressible test medium for performing the localization accuracy test in the American College of Radiology's stereotactic breast biopsy accreditation program¹. The phantom should be used whenever a new system is installed or repaired to ensure accurate needle placement. The phantom may also be used as a practice medium for both stereotactic and standalone biopsies.

The phantom body is shaped to represent a partially compressed breast. This allows the user to easily compress the breast to 4.5 cm thickness for optimum imaging. The shape also enables the phantom to be used in systems where the patient is either prone or sitting. The phantom is made from a proprietary gel with a physical consistency similar to human tissue and, since the gel is a non-flowing material, it won't leak out when punctured. The gel is surrounded by an elastic skin-like membrane to simulate realistic needle resistance.

The Model 013 can be reused multiple times with no special storage requirements. Note that extracted material from the phantom may be difficult to remove from the biopsy needle, preventing cleaning and re-use of the needle and other components.

Thus, the phantom is not recommended for use with vacuum-assisted biopsy systems or any other system whose components are not disposable.

Features

- Compressible: anthropomorphic shape allows accurate simulation of breast compression
- Re-usable:
 - Does not leak when punctured
 - Will not dry out
 - Masses can be biopsied multiple times
- Eleven dense masses in three different sizes
- Two microcalcification clusters
- Simulates needle resistance during biopsy
- Compatible with both stand alone and add-on stereotactic biopsy systems
- Works on digital systems

¹American College of Radiology, Stereotactic Breast Biopsy Quality Control Manual, 1999.

深圳市展业达鸿科技有限公司

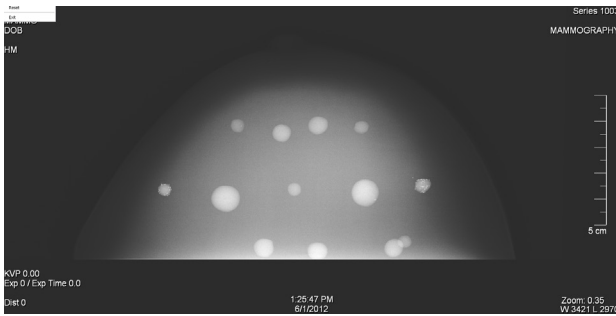
吕先生: 15920060912 (微信同号) 0755-22934005 (座机)

地址: 深圳市福田区八卦二路八卦岭工业区615栋419

邮箱: hongqi@thingstet.com

网址: www.thingstest.com

CIRS
Tissue Simulation & Phantom Technology



Mammography image of Model 013

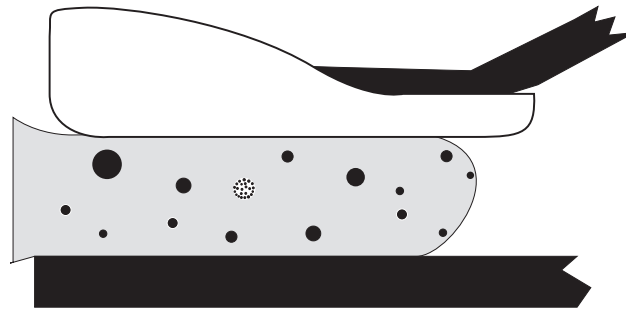


Illustration of Model 013 positioned on buckey

TARGETS	SHAPE	COLOR	SIZE RANGE	QTY	POSITIONING
Dense Masses (small)	Round	Black	6 mm	3	Random
Dense Masses (med)	Round	Black	9 mm	4	Random
Dense Masses (large)	Round	Black	11 mm	4	Random
Microcalcifications	Round	Orange	300 - 350 microns	2 clusters	Mid-Plane on right and left sides

Note: Calcifications are grouped around radiographically transparent white mass

SPECIFICATIONS

DIMENSIONS:	10 x 16.5 x 5 cm (6.5" x 2.5" x 4")
PHANTOM WEIGHT:	1 lbs. (0.4 kg)
PHANTOM VOLUME:	530 cc
MATERIALS:	Polyurethane

MODEL 013 INCLUDES

QTY	COMPONENT DESCRIPTION
1	Stereotactic Needle Biopsy Phantom
1	User Guide
-	12-Month Warranty*

*Please note: once any device has been inserted into the phantom (such as biopsy needles, localization wires, etc.) the 12 month warranty will not cover claims related to material desiccation or needle tracking.